

GOAL 4

2021-2022 Strategic Initiatives

Building a Robust University System

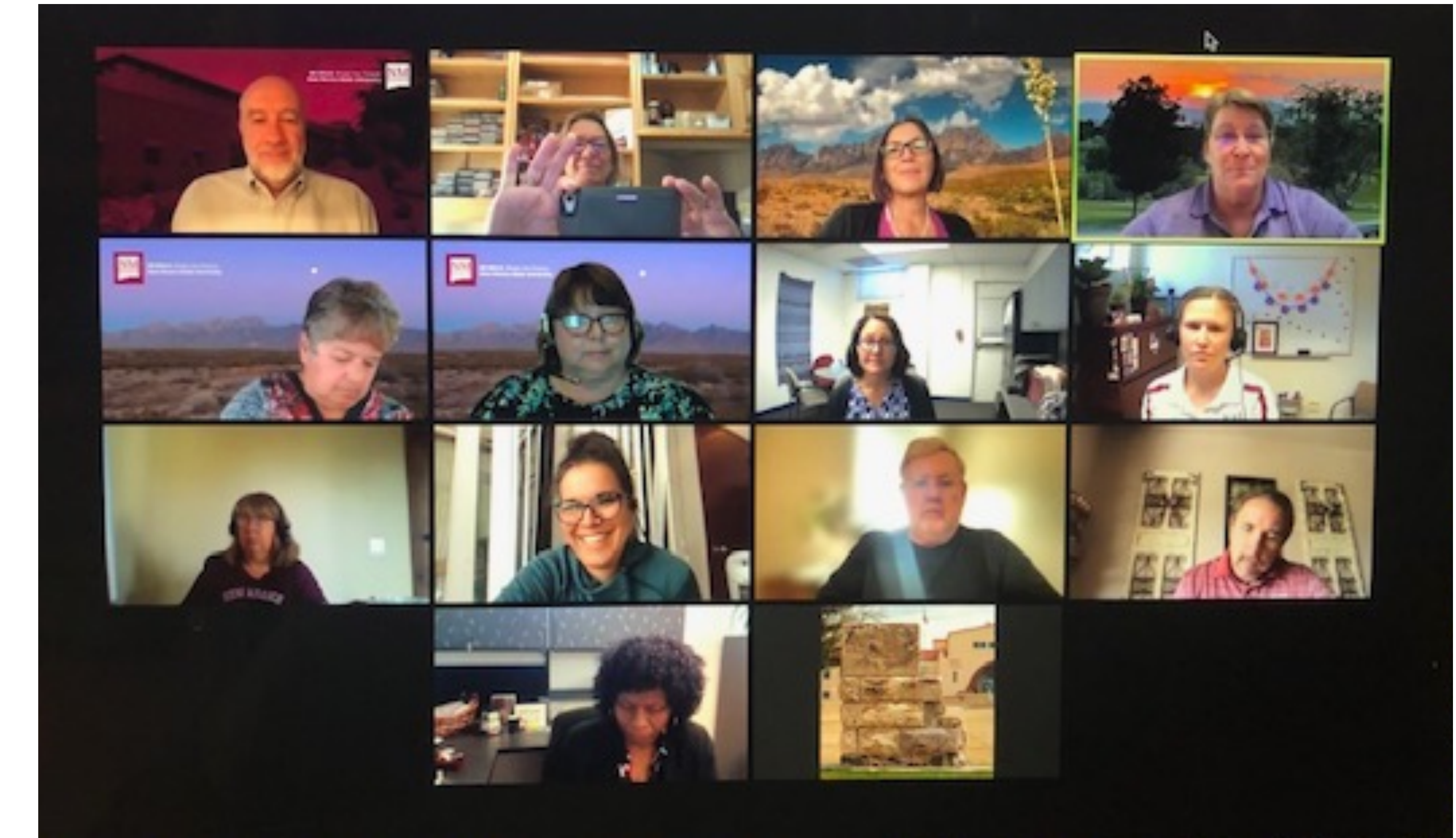
MODERN THINK SURVEY RESULTS

Outcomes of the “Great Colleges to Work For” study illustrated by campus. Designed to assess workplace quality at institutions of higher education.

| Poor | Warrants Attention | Fair to Mediocre | Good | Very Good to Excellent |
|----------|--------------------|------------------|-----------|------------------------|
| 0% - 44% | 45% - 54% | 55% - 64% | 65% - 74% | 75% - 100% |

| Category | Main | DACC | Alamogordo | Grants | Carlsbad |
|---|------|------|------------|--------|----------|
| Collaboration | 47% | 65% | 45% | 67% | 63% |
| Communication | 50% | 66% | 50% | 64% | 64% |
| Confidence in Senior Leadership | 44% | 71% | 40% | 68% | 53% |
| Diversity, Inclusion & Belonging | 66% | 82% | 72% | 82% | 76% |
| Faculty & Staff Well-being | 70% | 79% | 74% | 77% | 81% |
| Job Satisfaction & Support | 64% | 74% | 70% | 80% | 70% |
| Mission & Pride | 67% | 83% | 67% | 77% | 76% |
| Performance Management | 47% | 52% | 44% | 62% | 54% |
| Professional Development | 58% | 70% | 60% | 75% | 65% |
| Supervisor/Department Chair Effectiveness | 66% | 78% | 69% | 78% | 75% |
| Survey Average 1-5 | 58% | 73% | 60% | 73% | 68% |

GOAL 4 TEAM



GOAL 4 PROJECTS

The Goal 4 team is tracking 15 initiatives for benchmarking and metrics/trends. Initiatives tracked for Goal 4 represent a systemwide focus on process improvement, efficiencies, and identifying opportunities for additional shared services.

1. Establish The Office of Equity, Inclusion, and Diversity
2. NMSU System Cooperation & Integration
3. NMSU Forms Automation and Workflows
4. Policy Development and Management
5. ICT Futures Phase I
6. Pandemic Response and Planning
7. Staff Hiring and Compensation
8. Faculty Hiring and Compensation
9. Employee Annual Review Process
10. Budget Realignment Initiative Phase I
11. Sodexo Master Collaboration
12. Aggie Service Center Buildout/Centralization
13. HelioCampus Benchmarking Platform
14. HelioCampus Administrative Quality Satisfaction Survey
15. Facilities and Services Automation

COVID-19 RESPONSE

Performance of Strategic Support Team (SST) and Pandemic Action Team (PAT) for the university system response to the SARS-COV2 COVID-19 worldwide pandemic.

NMSU Reported Cases by Week – Spring 2021

